

Excellence **in Galvanizing**

**WEDGE**

**WORKSOP  
GALVANIZING LTD**

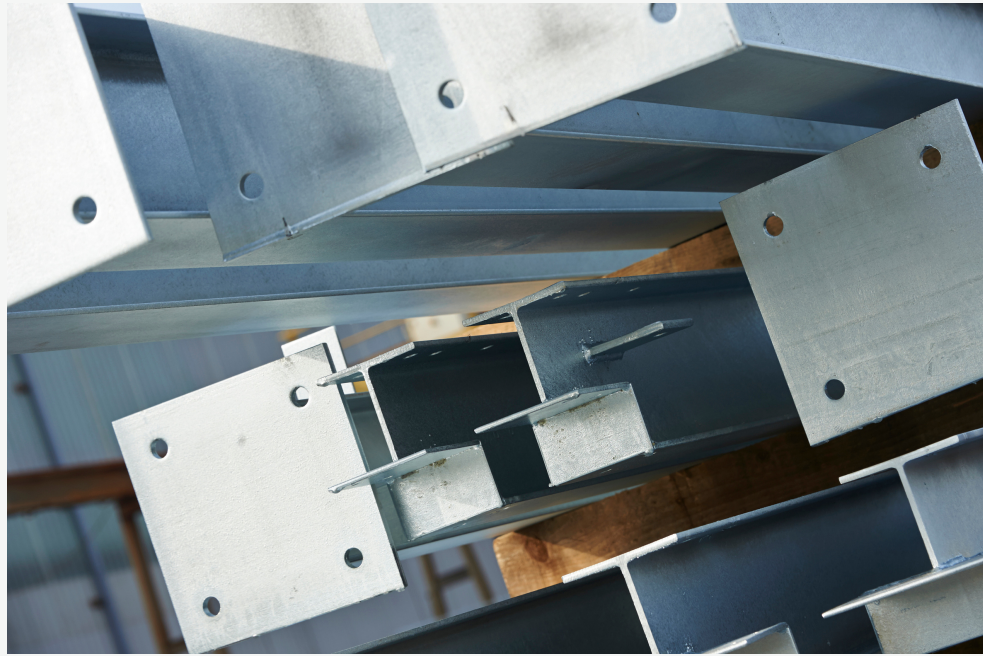
Hot Dip Galvanizing  
is a highly-effective  
corrosion prevention  
treatment that  
creates long-lasting  
protection for any  
type of steelwork

[www.wedge-galv.co.uk](http://www.wedge-galv.co.uk)

# WHY CHOOSE GALVANIZING

## SUSTAINABLE

Sustainability is becoming a significant consideration when choosing materials to ensure that buildings are as sustainable as possible. Galvanizing has long been seen as the most environmentally-friendly finishing process available to prevent corrosion, as it is highly sustainable and produces minimal waste.



## MAIN BENEFITS OF GALVANIZING

- Long life - galvanizing creates an easy to clean surface which can give a maintenance free life of more than 70 years (depending on the environment used in).
- When maintenance eventually becomes necessary, it is straightforward. No complex preparation treatments are required.
- Lowest lifetime costs - low initial cost and long life make galvanizing the most versatile and economic way of protecting steel for long periods.
- The benefits of no maintenance, or extended maintenance intervals, include fewer problems of access in remote areas, difficult terrain, when buildings are closely packed together or when there area safety restriction such as electricity pylons.
- Costing toughness - galvanizing is unique. The hot dip process produces a coating which is bonded metallurgically to the steel. No other coating process has this feature and, as a result, galvanized steel has by far the greatest resistance to mechanical damage during handling, storage, transport and construction - an important factor where steel work is to be shipped around the world.
- Complete coverage - because it is formed by dipping steel into molten zinc, all parts of the surface of the steel are coated - inside, outside, awkward corners and narrow gaps which would be impossible to protect in any other way.
- The coating actually tends to build up at vital corners and edges rather than thinning out as is often the case with brushed, sprayed or other dipped coatings.



## WEDGE GROUP GALVANIZING

Worksop Galvanizing Ltd is part of Wedge Group Galvanizing Ltd, the UK's largest hot dip galvanizing organisation. The Group can process anything from a 1.5mm washer to a 29 metre beam.

Our continuing investment in new technology and equipment, together with our commitment to customer care ensures that we offer you 'Excellence in Galvanizing'



### Industry Innovators

Continual investment and improvements ensure all our plants are designed and equipped to set industry-leading standards for sustainability and low environmental impact. These include:



Using the most innovative pulse-fired high velocity systems in our plants which improve fuel efficiency and performance



Rain water harvesting at our plants to re-use water in the process



LED lighting throughout our plants and offices



We were the first UK galvanizer to be lead free

## ABOUT US

Based in Worksop, Nottinghamshire, Worksop Galvanizing has the largest galvanizing bath in the UK at 21 metres long, enabling us to galvanize steelwork up to 29 metres in length. While we specialise in structural steelwork and other large products, we also carry out general galvanizing work.

We offer a nationwide collection and delivery service across the UK, along with a fast turnaround and unrivalled customer service. Our experienced team is always ready to provide free advice about your galvanizing requirements and to assist with steelwork design for optimum galvanizing quality.

## OUR SERVICES

- Collection and delivery service
- Delivery direct to site
- 24-hour turnaround on request
- Shot blasting
- Galvanize up to 29m (single beam double dip)
- Capacity up to 1,000t per week

# GALVANIZING & THE CIRCULAR ECONOMY



# OUR COMMITMENT TO QUALITY & SERVICE

## GALVANIZING QUALITY

All works are undertaken is hot dip galvanized strictly in accordance with EN ISO 1461 and under the control of ISO 9001.

All hot dip galvanizing is carried out in a CLASS 1 BATH with agreed compositional limits and records of assessment retained for 10 years.

Our galvanizing baths are also lead free.

Wedge Group Galvanizing also has supplier approval for Rail and Gas & Oil. We have been through their stringent audit processes so you can be assured of high quality galvanizing backed by excellent customer service.



## CUSTOMER PROMISE

Worksop Galvanizing is committed to continuous quality improvements with our 'Customer Focus Initiative'. This includes regular customer feedback surveys to ensure our customers are receiving the best service available.

We also have a continuous improvement team on site to help action any improvements we need to make following feedback from customers.



Excellence in Galvanizing

**WEDGE**

**Worksop Galvanizing Ltd**  
Claylands Avenue,  
Worksop, Nottinghamshire, S81 7BQ  
Tel: 01909 486384  
Email: [worksop@wgg ltd.co.uk](mailto:worksop@wgg ltd.co.uk)  
[www.wedge-galv.co.uk](http://www.wedge-galv.co.uk)

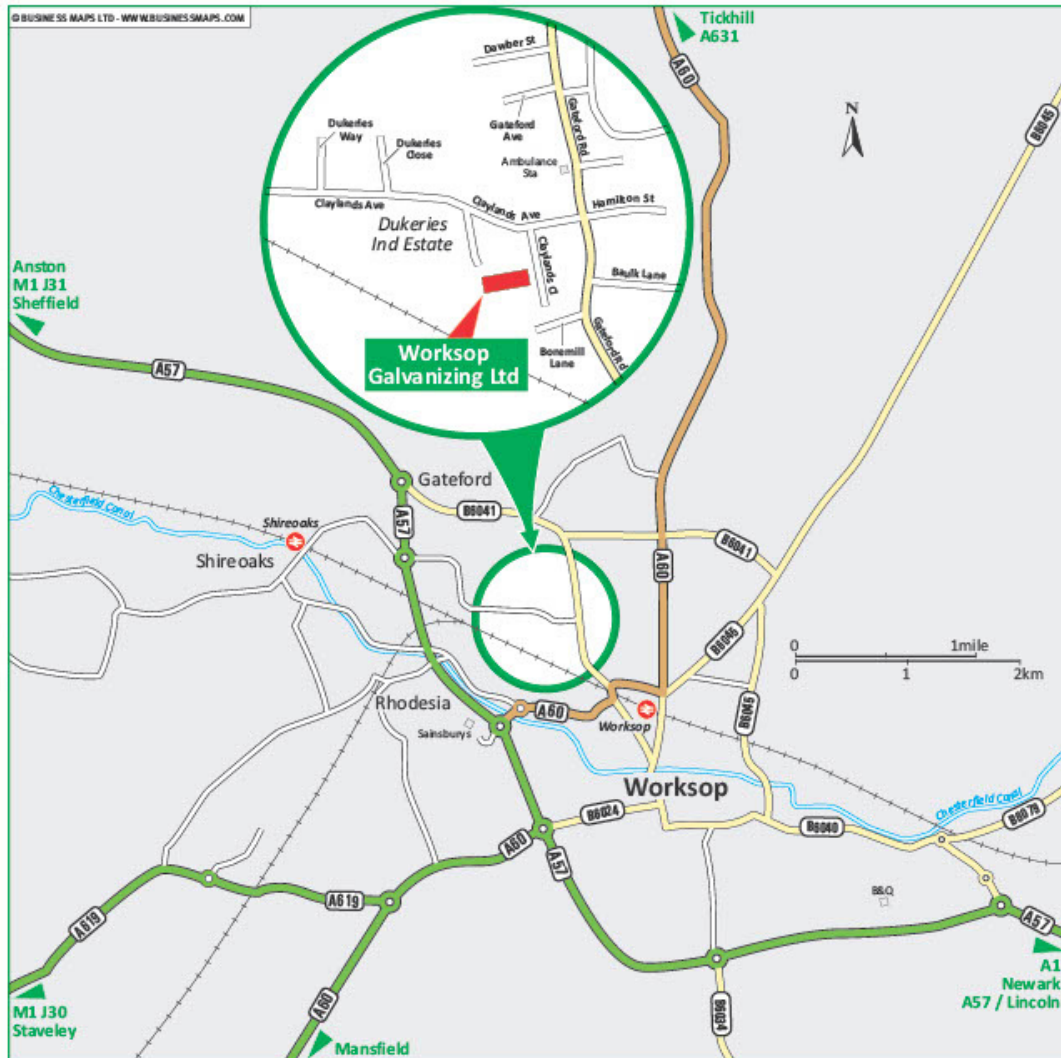


**From M1 J31**  
Leave the M1 at junction 31 (signed Worksop & A57).  
Take the A57 exit from the roundabout (signed Worksop & A57).  
Continue on A57 over the next two roundabouts.  
At the next roundabout, take the first exit onto Claylands Avenue (signed Dukeries Industrial Estate).  
Turn right onto Claylands Close.  
We are located on the right hand side (see inset).

**From M1 J30**  
Leave the M1 at junction 30 (signed Chesterfield, Sheffield (S), A6135 & Worksop (A619)).  
Take the third exit (signed Worksop & A616).  
At the next roundabout take the first exit (signed Worksop & A619).  
Carry straight on at the next roundabout.  
Keep on this road and join the A60 (Mansfield Road) to Worksop.  
At roundabout take the second exit onto the A57 (signed Sheffield, Rotherham & A57).  
Continue straight over the next roundabout.  
At the next roundabout, take the third exit onto Claylands Avenue.  
Follow directions above From M1 J31.

**By Train**  
Worksop is served by trains from Nottingham, Mansfield, Lincoln, Sheffield & Retford.

© BUSINESS MAPS LTD - WWW.BUSINESSMAPS.COM



**Bath Size:** 20.5m x 1.32m x 2.4m  
**Double Dip:** 29m  
**Max Lift:** 16 Tonnes

T: 01909 486384

E: [worksop@wgg ltd.co.uk](mailto:worksop@wgg ltd.co.uk)